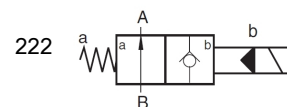


2/2-way poppet valve SVN222BE12WDS1113

250 bar



100 L/min



Product characteristics

- The leakproof hydraulically pilot operated 2/2-way poppet valve offers a high operational reliability even after long periods under high pressure.
- simple design
- suitable for ambient temperatures up to +75 °C
- coil wound without junctions
- optionally with or without manual override

Table of Contents

Technical data.....	1
Characteristic lines	2
Dimensions and connections	3
Order information	4

Technical data

General

weight [kg]	ambient temperature [°C]	mounting position
0.6	-30 to +75	arbitrary

Hydraulic characteristics

Hydraulic fluid: mineral oil according to DIN 51524, other media on request

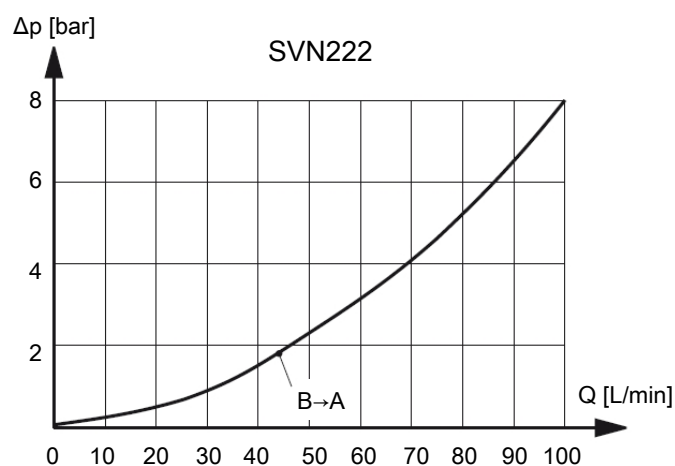
operating pressure (maximal) [bar]	hydraulic fluid temperature [°C]	viscosity [mm ² /s]	permissible degree of pollution	filter
250	-25 to +75	10-600	max. 22/19/16 according ISO4406	filter retention rate $\beta_{25} > 75$

Actuation

actuation	voltage	power consumption	duty cycle	protection class according DIN 40050
electromagnetic with / without manual override	AC $\pm 10\%$ with rectifier socket	18 W; P_{20} (=power at 20 °C)	continuous operation	IP65 with plug

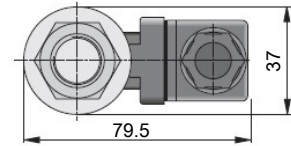
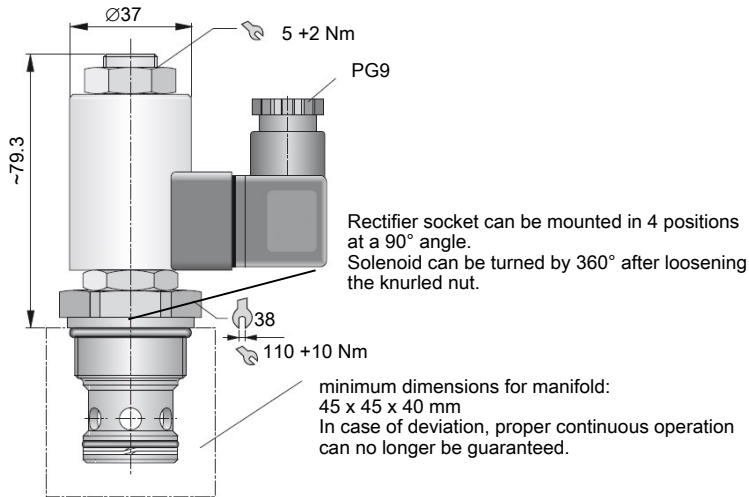
Characteristic lines

measured at +50 °C temperature of hydraulic fluid, viscosity 35 mm²/s, tolerance $\pm 5\%$

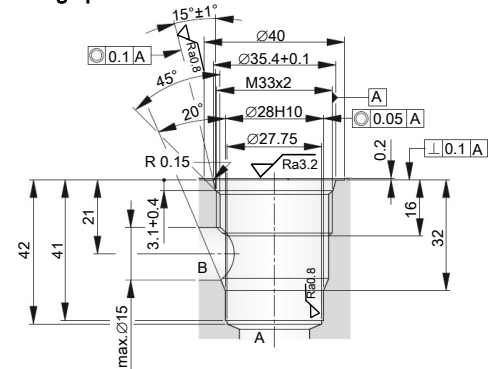


Dimensions and connections

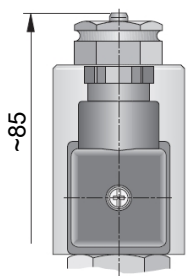
Dimensions are given in mm.



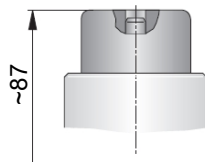
mounting space



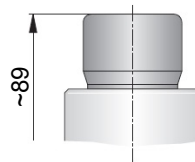
Manual override



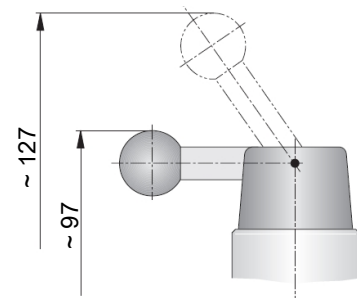
H



HE 31390



HE 31391



HE 30357

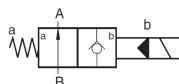
Order information

Type code

ordering example

SVN	222	BE12	W	D	H	S1113	A1
-----	-----	------	---	---	---	-------	----

type
222



serial identification

see basic information (catalogue)

electrical data

W 230 V 50/60Hz ~(AC)
with rectifier socket

special design

S1113 special number for high temperature
design and coil wound without junctions

manual override

basic version

H possible operating types for manual override:

HE31390* manual override pin countersunk

HE31391* push button

HE30357* lever

HE32398* closed

* not included in delivery